

Disaster and Evacuation Card



The Disaster and Evacuation Card is useful in an emergency for local residents who live in places at risk for wind and flood damage and residents at risk of disaster due to tsunamis and earthquakes at warning levels 1 to 5 on page 93. Fill it out in advance.



Back

How to fill out the "Disaster and Evacuation Card" (example)

Front

Make a note of what you think you'll need to deal with at the time of evacuation, so that you do not forget it!

When considering "Evacuation signals," refer to <<Evacuation actions for Mitoyo citizens>> on the back!

Evacuation sites should be safe places based on the characteristics of each type of disaster!

Memo column (points to consider, etc.)

・〇〇さんの持病の薬を一緒に持っていく
 ・車で避難するなど
 ・病院 〇〇-△△△△-◇◇◇◇

Disaster and Evacuation Card

Furigana みとよ たろう
 Name 三豊 太郎
 Address 三豊市〇〇町〇〇-□□
 Gender 男 Blood type A Type Family members 4
 Emergency contact (Wife)△△△-□□□□-〇〇〇〇



Inside

Disaster	Evacuation signal	Evacuation action
Earthquake	Preparation for evacuation, start evacuation elderly people, etc.	〇〇Town Community Center Secure place at home
Tsunami	If a tsunami warning is issued	〇〇Town Community Center Nearby safe locations
Wind and flood damage	When Mr./Ms. 〇〇 contacts you	〇〇Town Community Center Secure place at home

Whom are you concerned about? (Elderly people in your neighborhood, etc.)

! Whom do you contact if you receive information to call attention or evacuation information?

Whom? Contact info?

Mr./Ms.〇〇 (cannot walk well) 080-0000-0000

Mr./Ms.〇〇 (living alone) 090-0000-0000

Write the names of people who need help in your neighborhood, neighborhood association, etc. Let's talk with everyone.

Cut along the dotted line with scissors.

Memo column (points to consider, etc.)

Disaster and Evacuation Card

Furigana
 Name
 Address
 Gender Blood type Family members
 Type
 Emergency contact

Talk with your family about when and where to evacuate in case of disaster!

Memo column (points to consider, etc.)

Disaster and Evacuation Card

Furigana
 Name
 Address
 Gender Blood type Family members
 Type
 Emergency contact

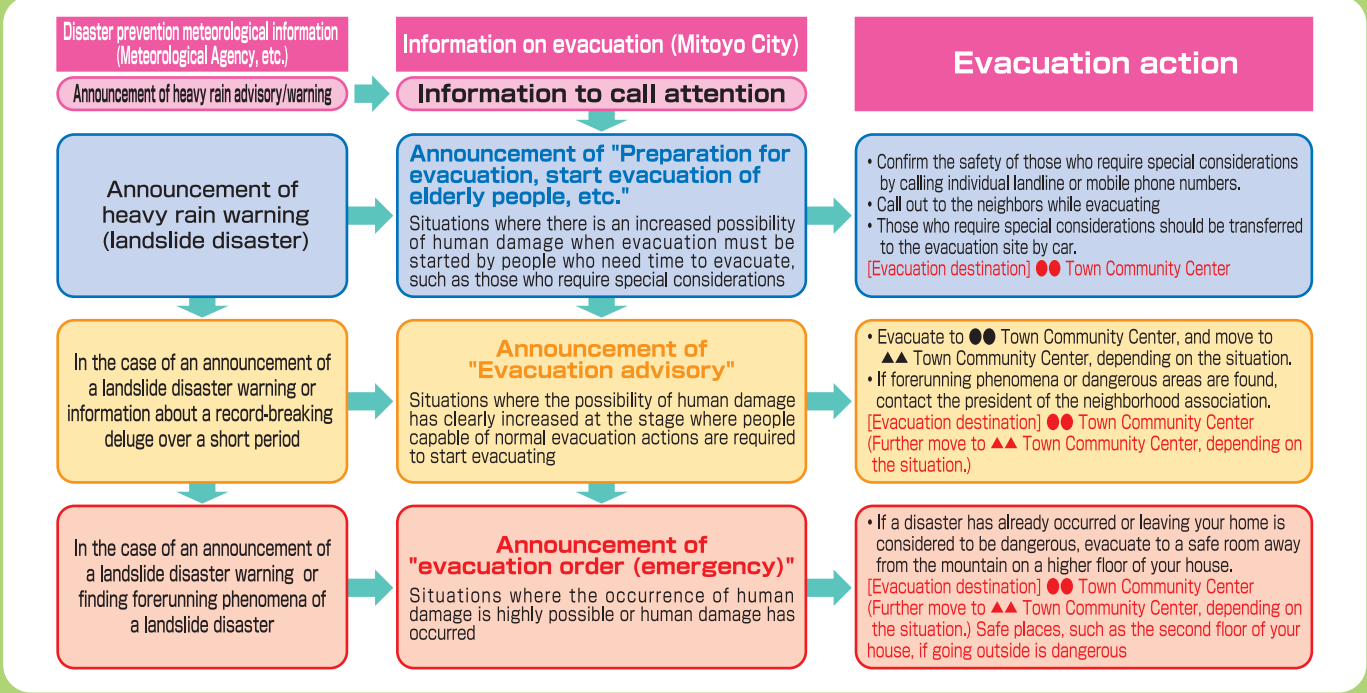
Memo column (points to consider, etc.)

Disaster and Evacuation Card

Furigana
 Name
 Address
 Gender Blood type Family members
 Type
 Emergency contact



Evacuation actions for Mitoyo citizens



Cut along the dotted line with scissors.

We should help each other when there is the possibility of a disaster.

Disaster	Evacuation signal	Evacuation action
Earthquake		Daytime Nighttime
Tsunami		Daytime Nighttime
Wind and flood damage		Daytime Nighttime

Whom are you concerned about? (Elderly people in your neighborhood, etc.)

Whom do you contact if you receive information to call attention or evacuation information?

Whom? Contact info?

Disaster	Evacuation signal	Evacuation action
Earthquake		Daytime Nighttime
Tsunami		Daytime Nighttime
Wind and flood damage		Daytime Nighttime

Whom are you concerned about? (Elderly people in your neighborhood, etc.)

Whom do you contact if you receive information to call attention or evacuation information?

Whom? Contact info?

Disaster	Evacuation signal	Evacuation action
Earthquake		Daytime Nighttime
Tsunami		Daytime Nighttime
Wind and flood damage		Daytime Nighttime

Whom are you concerned about? (Elderly people in your neighborhood, etc.)

Whom do you contact if you receive information to call attention or evacuation information?

Whom? Contact info?

