

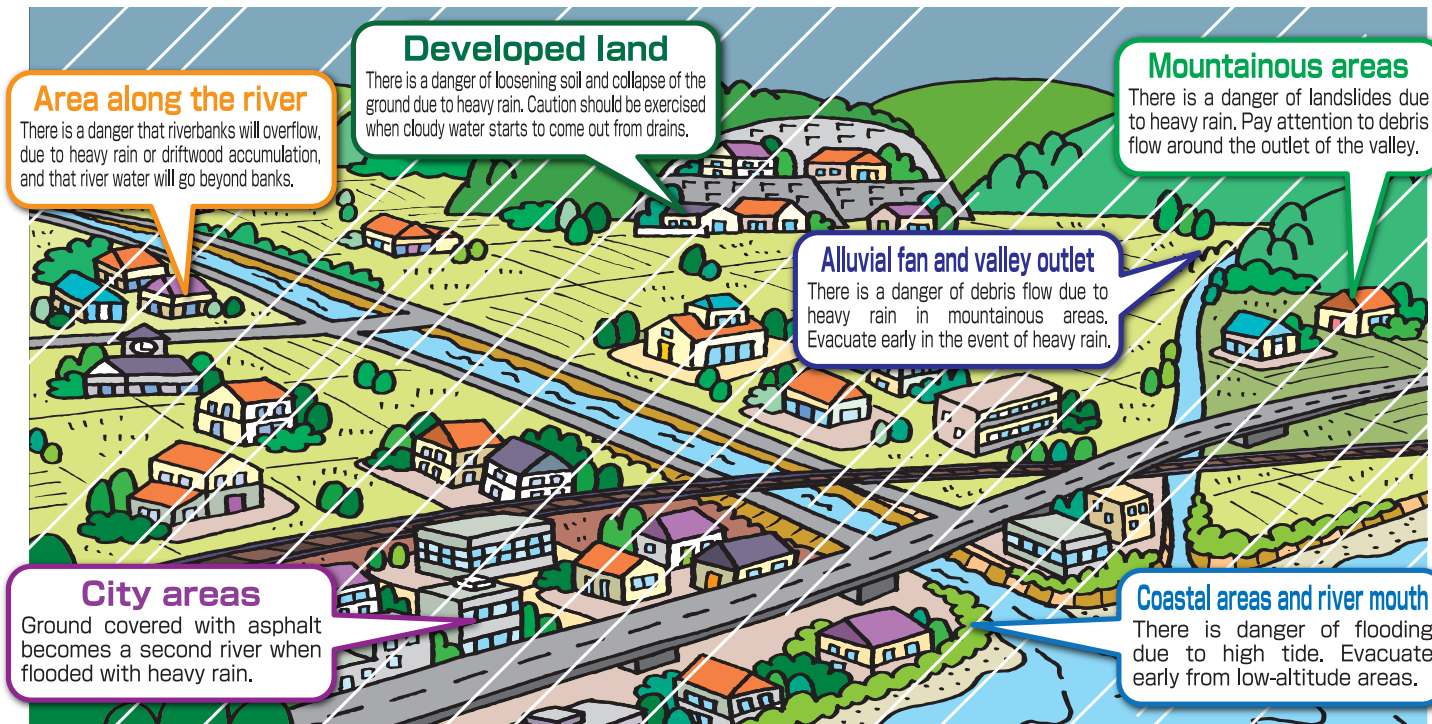


Wind and flood damage



Evacuate early with time to spare!

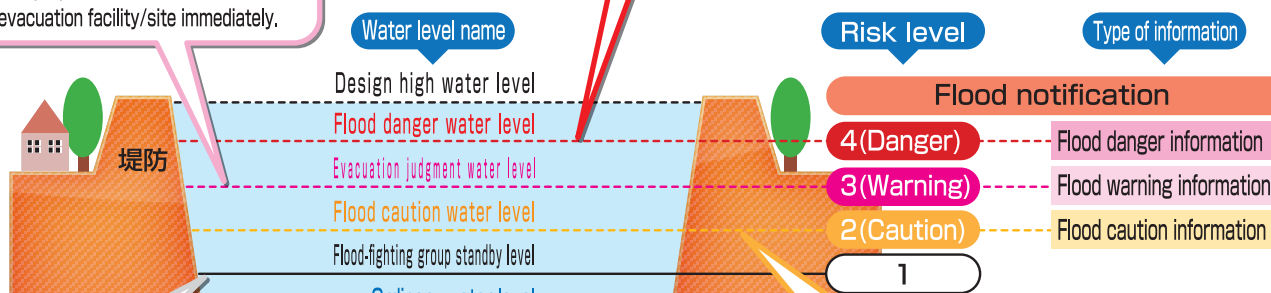
The power of typhoons and heavy rain is immeasurable, causing significant damage to human life and property. Thoroughly understand the geological features of the area you live in, and always pay careful attention to meteorological information.



Information on the water level of the river and evacuation actions

The water level indicates the need for evacuation. Bring your emergency items which have been prepared in advance, and evacuate to the evacuation facility/site immediately.

The water is at a level that may lead to overflow from the river or collapse of riverbanks. There is impending danger. Evacuate to the evacuation facility/site as soon as possible.



The water level indicates flood-fighting activities should be prepared. Pay attention to future changes in the water level.

The water level indicates a need for flood-fighting activities. Be prepared to evacuate. Elderly people and children should be prepared to evacuate.

Gauging station Water level information	Saita River			Takase River		
	Eto Bridge	Nagase Bridge	Gaku Bridge	Mino Bridge	Takase Bridge	Samata Bridge
Design high	4.80m	2.80m	4.00m	3.30m	4.00m	3.62m
Flood danger	— m	2.50m	— m	3.30m	— m	2.95m
Evacuation	— m	2.20m	— m	2.75m	— m	2.60m
Flood caution	4.00m	1.90m	2.90m	2.40m	3.20m	2.05m
Flood-fighting	2.70m	1.20m	1.90m	1.30m	1.90m	0.80m