

- No. Evacuation site
- City office/branch
- Firefighting related
- Related to the police
- Hospital

- Heliport
- Station house for firefighters
- Location of AED (automated external defibrillator)
- Radio communication for disaster prevention and administration

- Administrative boundary
- Railway (JR)
- Station
- Expressway
- National road
- Major local/prefectural road

Flood inundation area

River flood height (assumed maximum)

- 5.0 m or more
- 3.0 m - less than 5.0 m
- 0.5 m - less than 3.0 m
- Less than 0.5 m

River flood height (planned scale)

- 0.5 m - less than 5.0 m
- Flooded areas such as house collapse (floodwaters/riverbank erosion)

Pond flooding

- Pond flood inundation assumed area

For more information on the inundation height, etc., see the respective pond hazard maps.

Flooded area due to high tide

Assumed inundation height

- 3.2 m or higher
- 2.3 m - less than 3.2 m
- 1.2 m - less than 2.2 m
- Less than 1.2 m

*The inundation height of Niicho is 0.2 m higher.
Source: Basic information materials on measures against high tide, Kagawa Prefecture

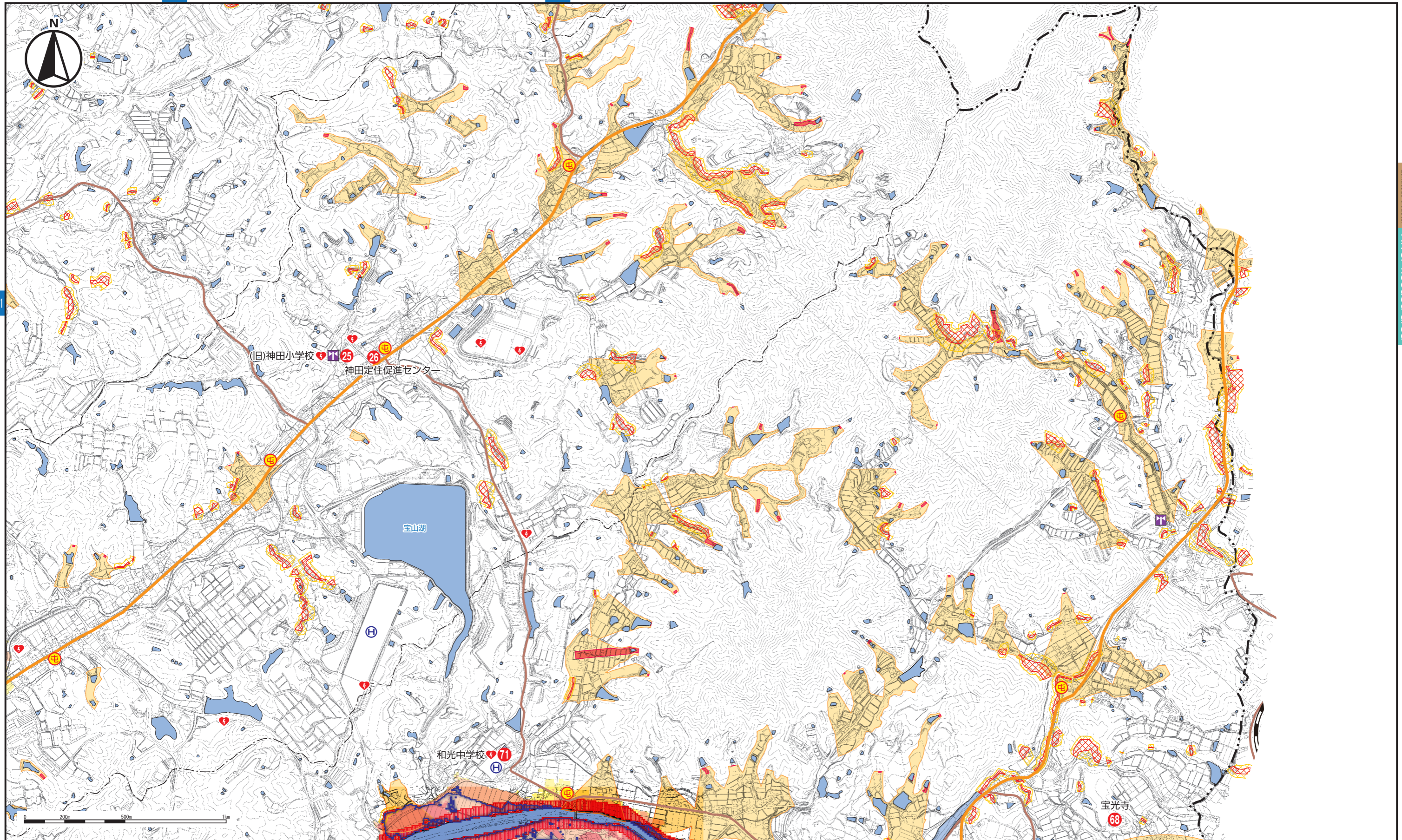
Warning area based on the Sediment Disasters Prevention Act

- Landslide disaster special warning area (steep slope)
- Landslide disaster warning area (steep slope)
- Landslide disaster warning area (landslide)
- Landslide disaster special warning area (debris flow)
- Landslide disaster warning area (debris flow)

P72

P82

P81



P85

83

P87

84