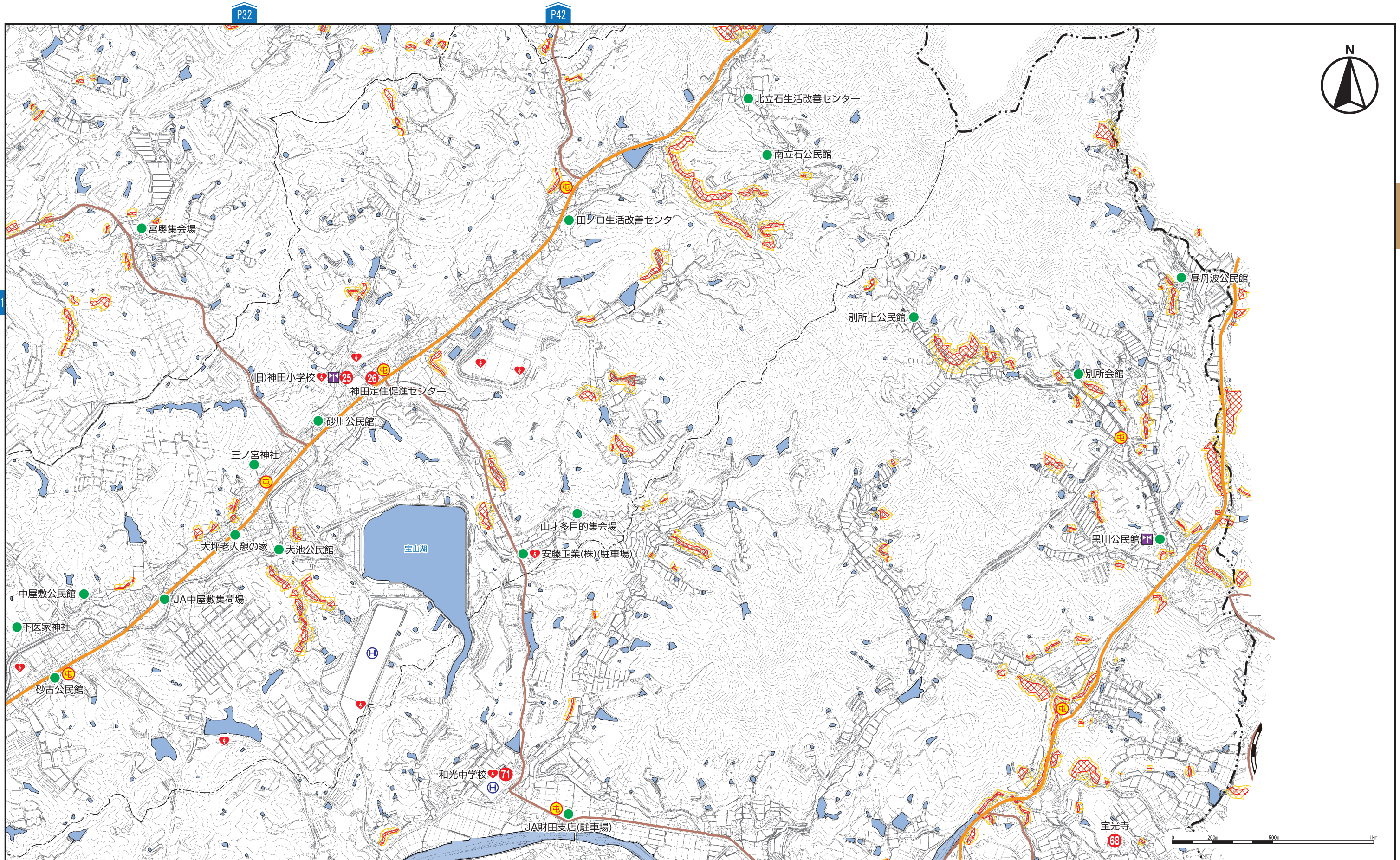


- No. Evacuation site
- Temporary evacuation site (workshop opinion)
- City office/branch
- Firefighting related
- Related to the police
- Hospital
- Heliport
- Station house for firefighters
- Location of AED (automated external defibrillator)
- Radio communication for disaster prevention and administration
- Administrative boundary
- Railway (JR)
- Station
- Expressway
- National road
- Major local/prefectural road

- Flood-assumed area due to tsunami
- Inundation height: 4.0 m - less than 5.0 m
 - Inundation height: 3.0 m - less than 4.0 m
 - Inundation height: 2.0 m - less than 3.0 m
 - Inundation height: 1.0 m - less than 2.0 m
 - Inundation height: 0.3 m - less than 1.0 m
 - Inundation height: 0.01 m - less than 0.3 m

- Warning area based on the Sediment Disasters Prevention Act
- Landslide disaster special warning area (steep slope)
 - Landslide disaster warning area (steep slope)
 - Landslide disaster warning area (landslide)

- Pond flooding
- Pond flood inundation assumed area
- For more information on the inundation height, etc., see the respective pond hazard maps.



P41

P32

P42

P45

P47

43

44